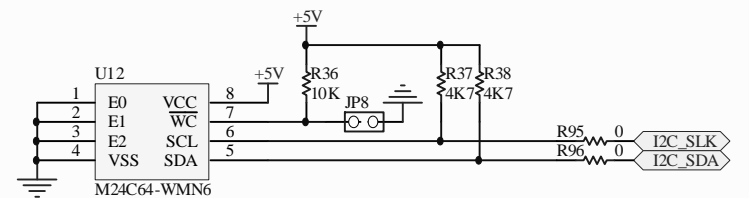
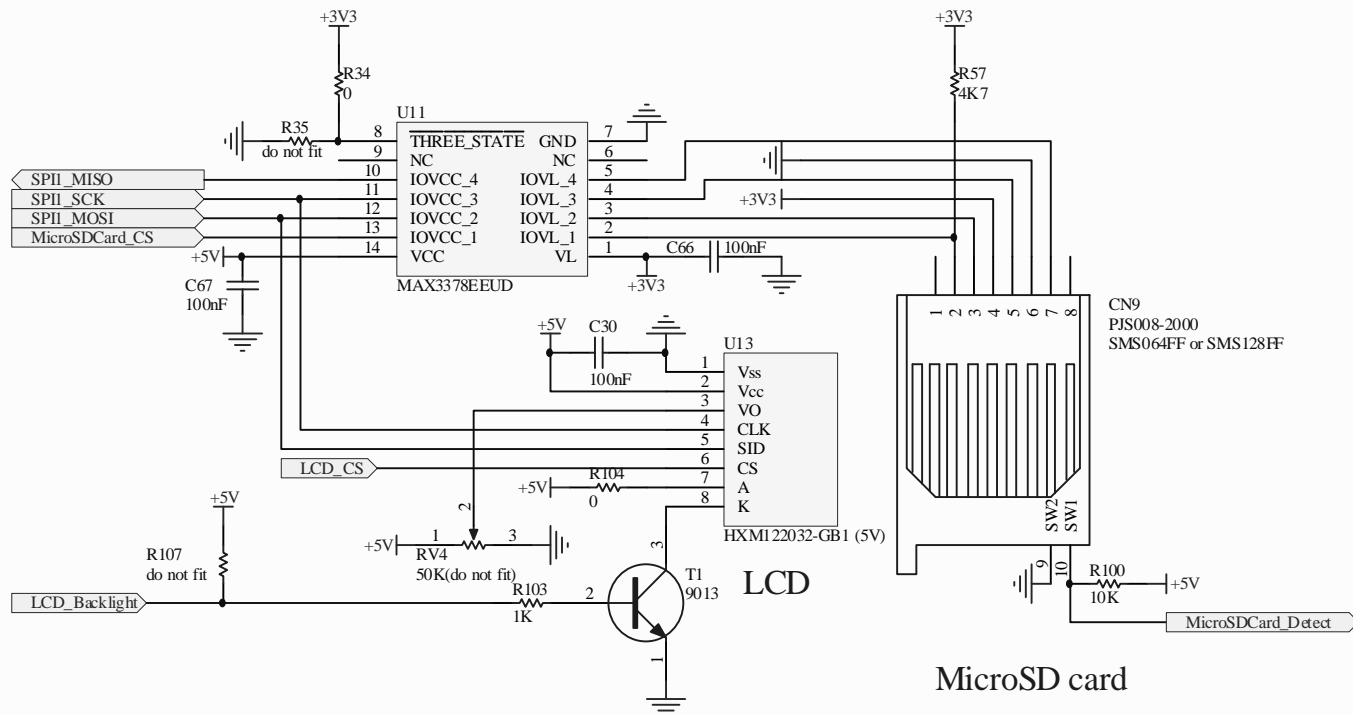
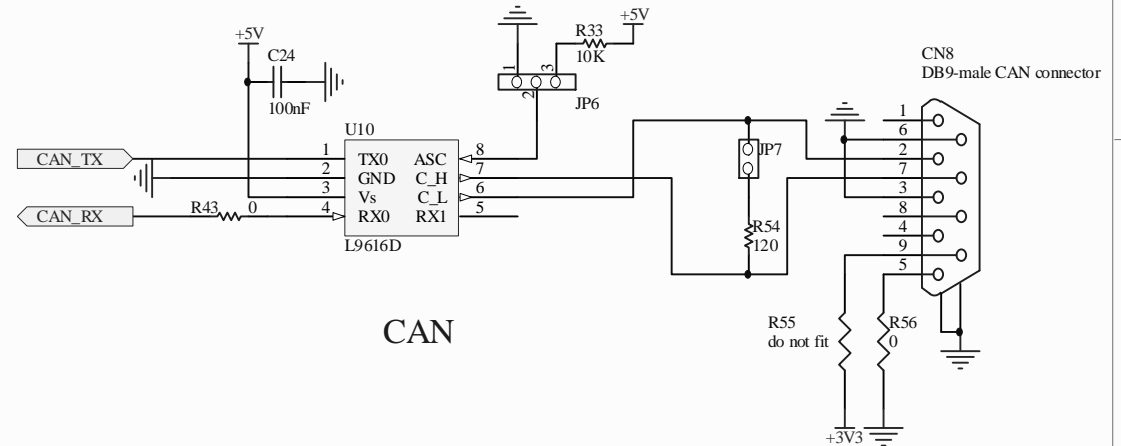
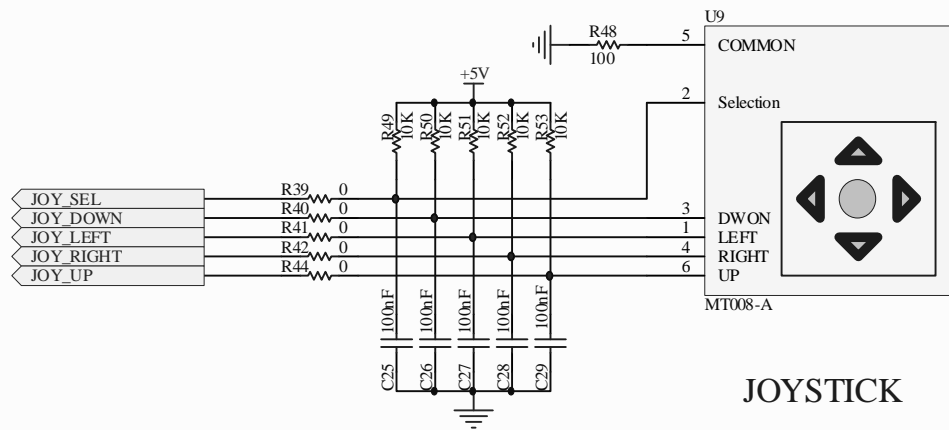


**STMicroelectronics**

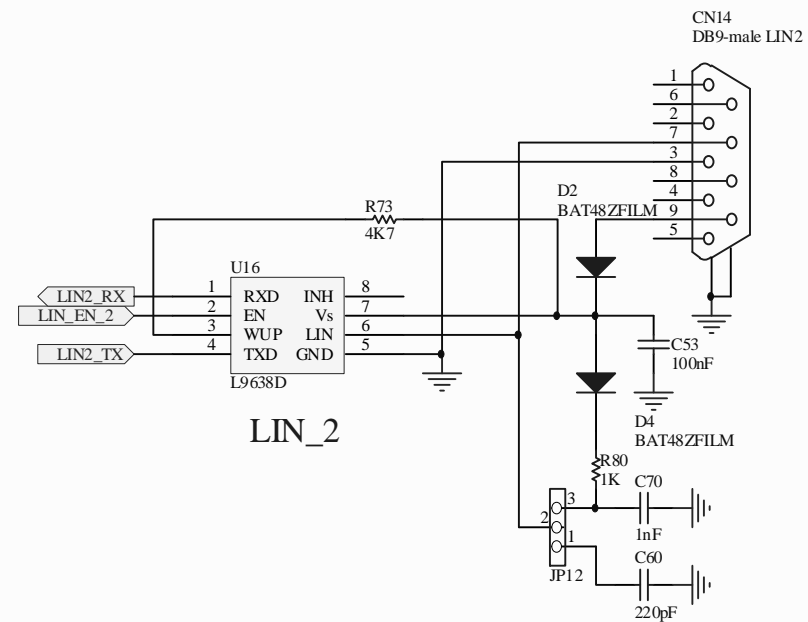
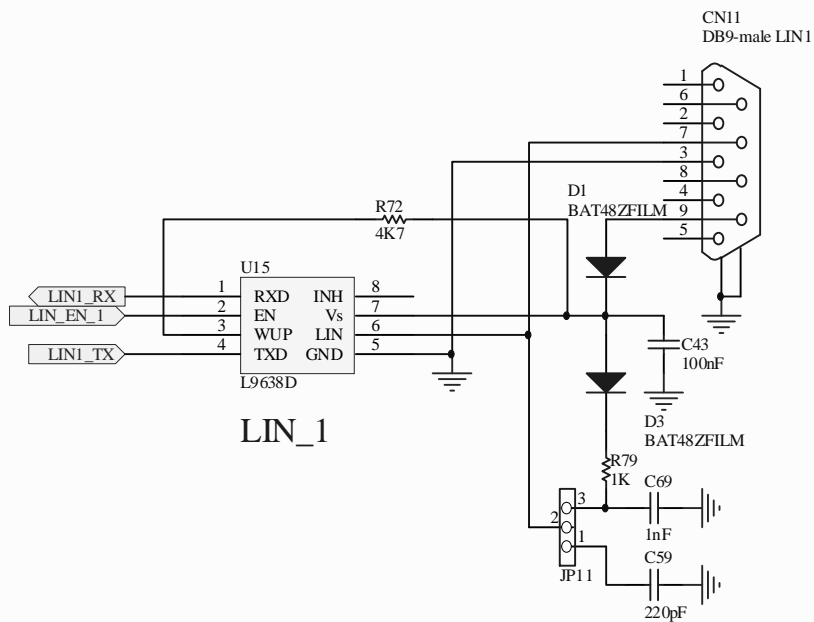
Title: **STM8/128-EVAL Audio**

Number: MB631 | Rev: D.2(PCB.SCH) | Date: 2008-08-28 | Sheet 5 of 12



**STMicroelectronics**

Title:  
**STM8/128-EVAL JOY\_LCD\_SD\_CAN\_EEPROM**  
Number:MB631 Rev: D.2(PCB.SCH) Date: 2008-08-28 Sheet3 of 12

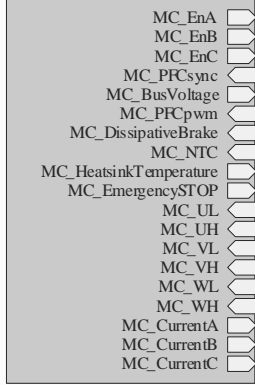


**STMicroelectronics**

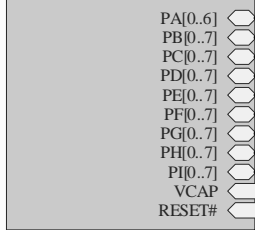
Title: **STM8/128-EVAL LIN**

Number: MB631 | Rev: D.2(PCB.SCH) | Date: 2008-08-28 | Sheet 9 of 12

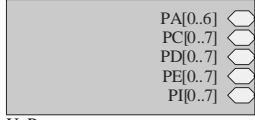
U\_MotorCtrl  
MotorCtrl.SchDoc



U\_STIce\_ExConnector  
STIce\_ExConnector.SchDoc



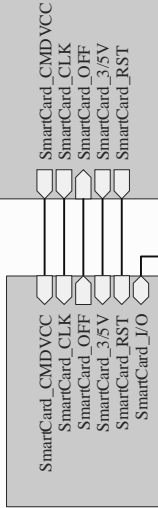
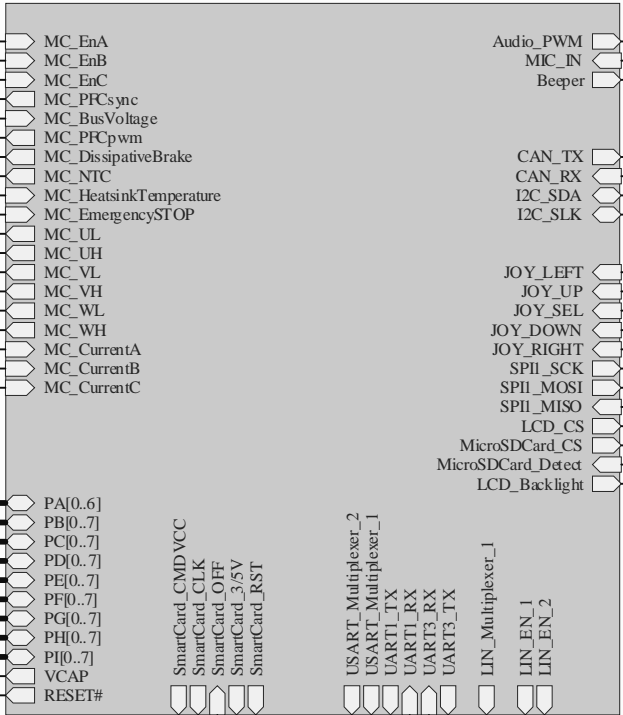
U\_QST\_connector  
QST\_connector.SchDoc



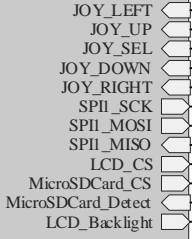
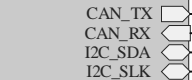
U\_Power  
Power.SchDoc



U\_MCU  
MCU.SchDoc



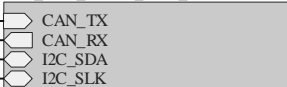
U\_SmartCard  
SmartCard.SchDoc



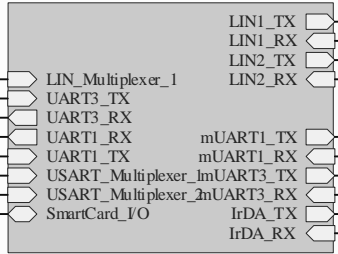
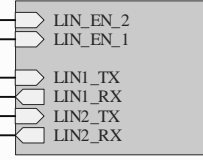
U\_Audio  
Audio.SchDoc



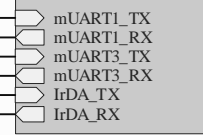
U\_JOY\_LCD\_SDCard\_CAN\_EEPROM  
JOY\_LCD\_SDCard\_CAN\_EEPROM.SCHDOC



U\_LIN  
LIN.SchDoc



U\_UART\_LIN\_IrDA\_SmartCard  
UART\_LIN\_IrDA\_SmartCard.SchDoc

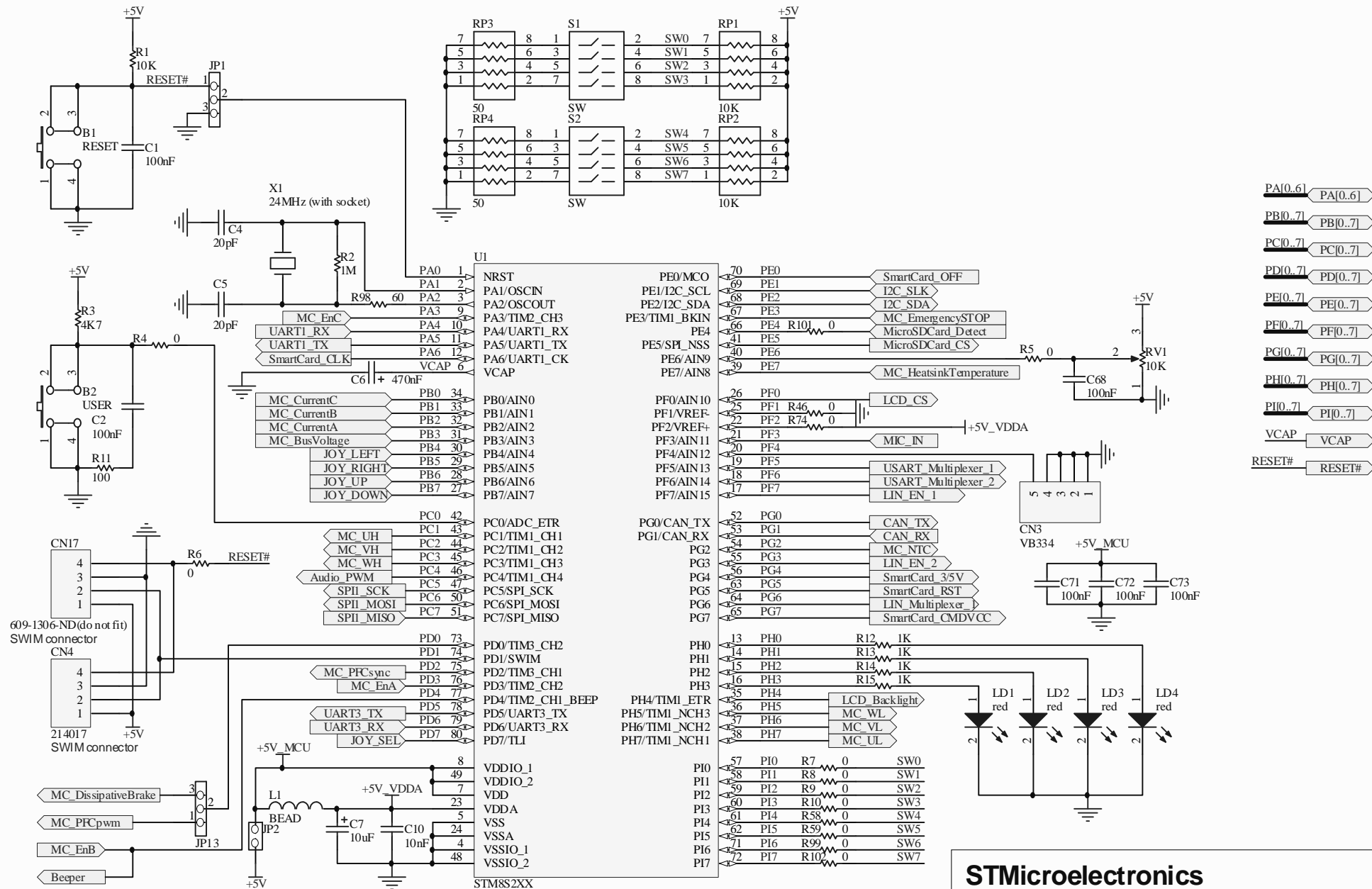


U\_UART\_IrDA  
UART\_IrDA.SchDoc

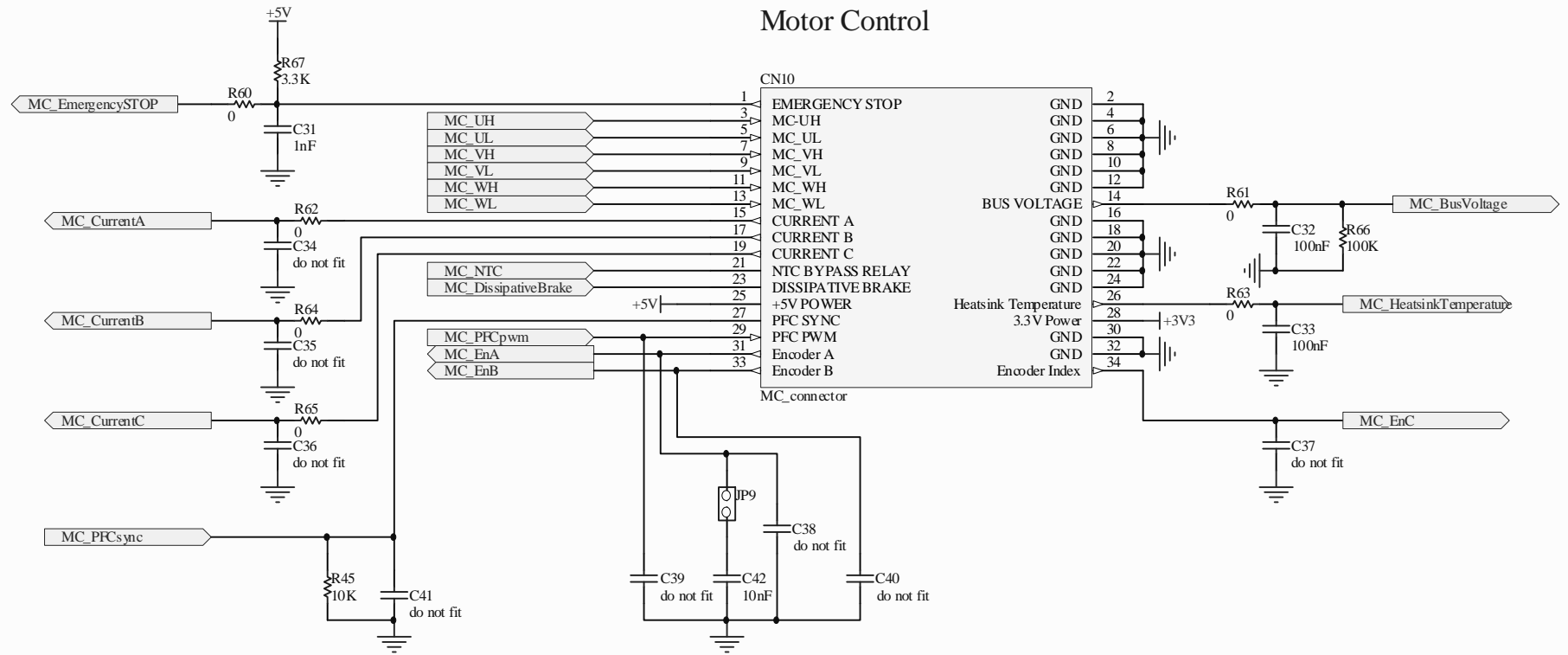
STMicroelectronics

Title: STM8/128-EVAL

Rev D.2 modification: UART , Timers & ADC names  
update



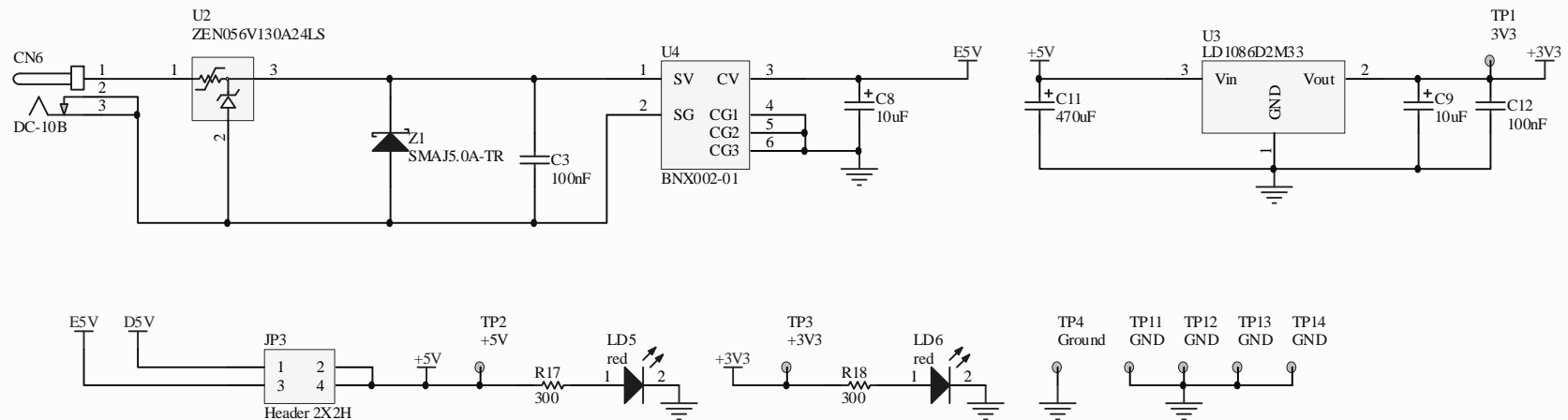
## Motor Control



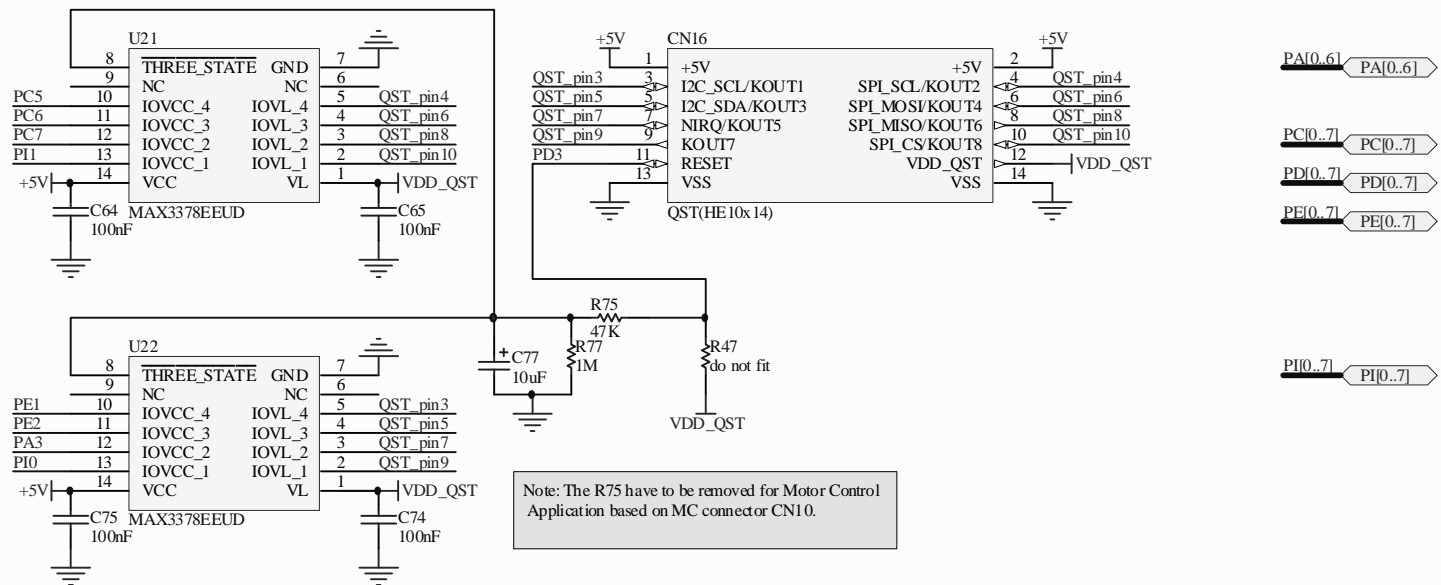
**STMicroelectronics**

Title: **STM8/128-EVAL Motor control**

Number: MB631 | Rev: D.2(PCB.SCH) | Date: 2008-08-28 | Sheet 6 of 12



Jumper for choice between power connector and daughter board



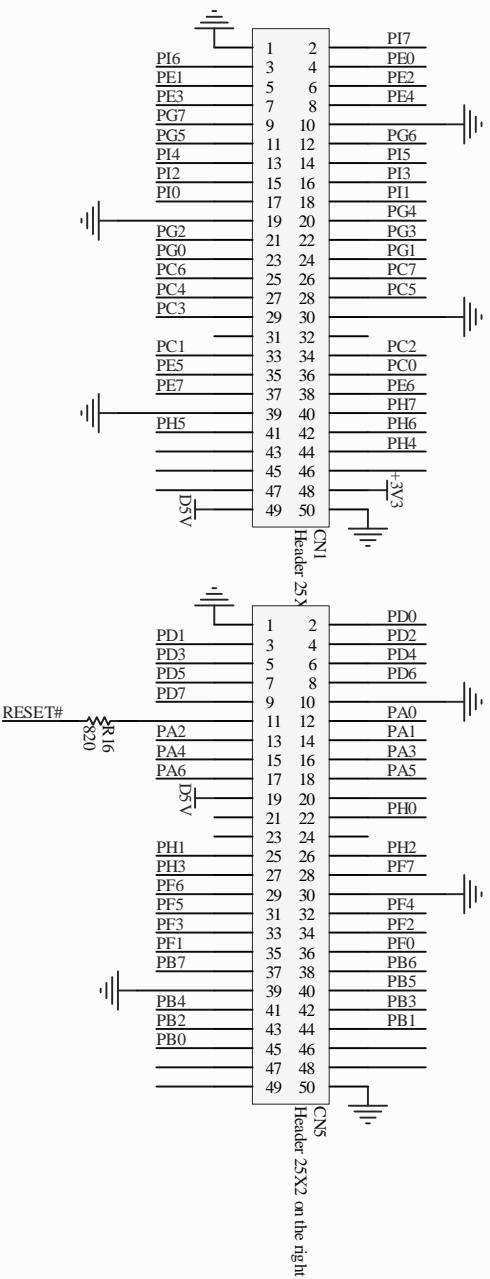
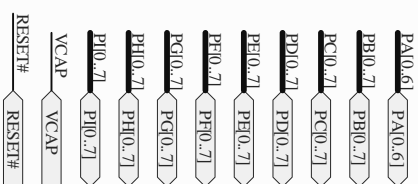
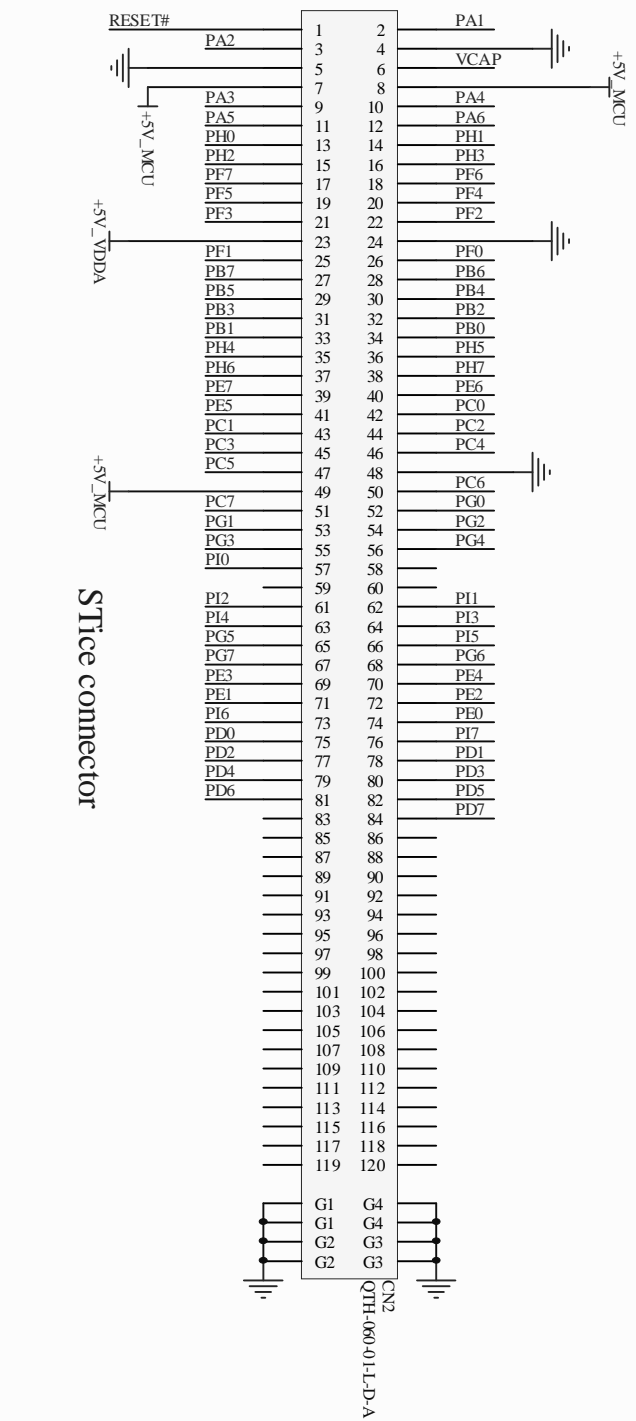
**STMicroelectronics**

Title: **STM8/128-EVAL QST**

Number: MB631 | Rev: D.2(PCB.SCH) | Date: 2008-08-28 | Sheet 8 of 12





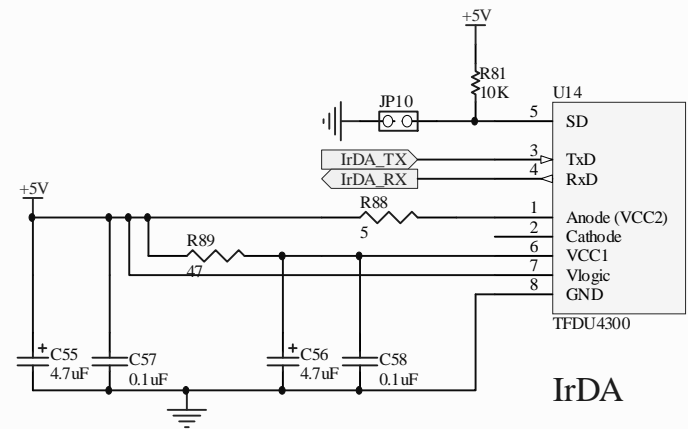
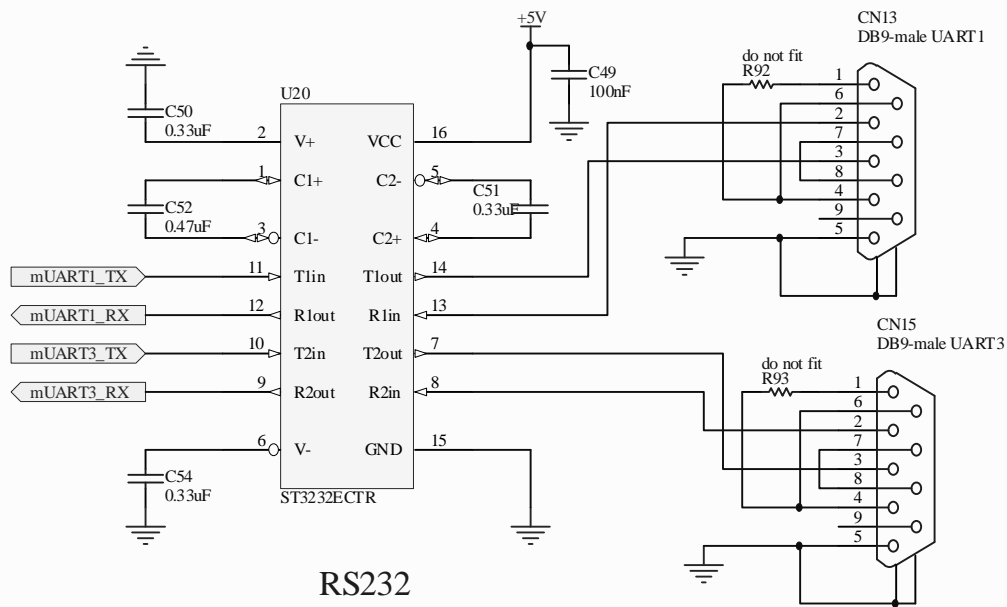


## Extension connector

## STMicroelectronics

Title: STM8/128-EVAL STice&Extension connector

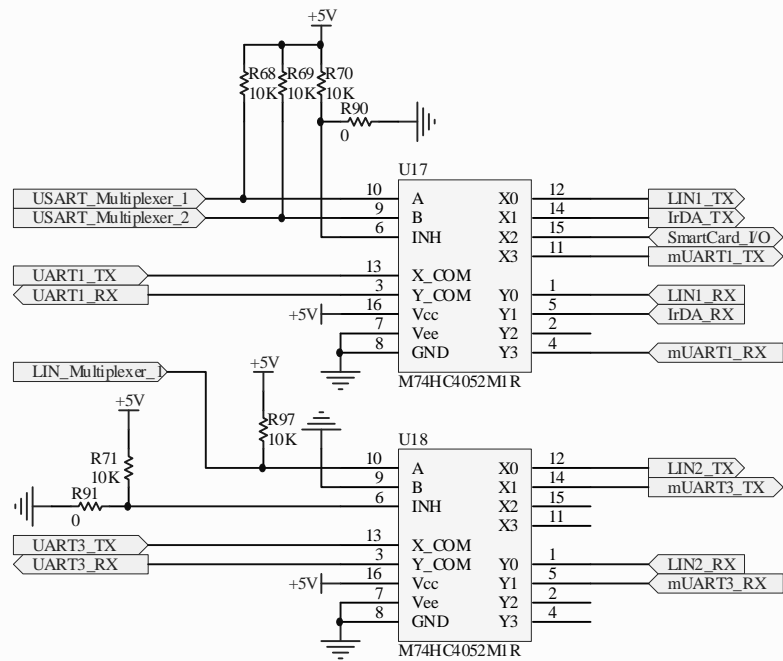
Number: MB631 Rev: D.2(P:CB, SCH) Date: 2008-08-28 Sheet 7 of 12



**STMicroelectronics**

Title: **STM8/128-EVAL UART&IrDA**

Number: MB631 | Rev: D.2(PCB.SCH) | Date: 2008-08-28 | Sheet 10 of 12



MUX

**STMicroelectronics**

Title: **STM8/128-EVAL MUX**

Number: MB631 | Rev: D.2(PCB.SCH) | Date: 2008-08-28 | Sheet 4 of 12